

face.

Aura Boost 60min | 148

Aura's Signature Express Facial

Exfoliation / Express Extraction / Lymphatic Drainage / Hy-O-Silk Hydroboost Mask

All skin types

Pure Elements 60min | 148

Organic Facial

Cleansing / Exfoliation / Lymphatic Drainage / Baobab Mask / Phyio Marine Peel off Mask

All skin types

Aura Crystal Rose 60 min | 168

Hydration & Brightening Facial

Brightens up the skin / Plumping / Moisture Binding

All skin types

Aura Glow 90min | 188

Deep Hydration Facial

Exfoliation / Extraction / Lymphatic Drainage / Hydroboost Lumination Mask / Ampoule & Cryo Treatment

All skin types

Guasha 90min | 188

Face Lift & Detox Facial

Exfoliation / Extraction / Guasha Massage / Ampoule & Cryo Treatment / Physio Marine Peel Off Mask

All skin types except for sensitive

Rejuvenate 90min | 188

Brightening Facial

Exfoliation / Extraction / Lymphatic Drainage / Hydroboost-Vital C Mask / Ampoule & Cryo Treatment

Dry to normal skin

Royal Gold 75min | 228

Anti-Aging

Improves skin's elasticity / Reduce wrinkles & fine lines / Reduce blemishes & marks on skin

All skin types

Regenerate 90min | 228

Acne Control Facial

Exfoliation / Extraction / Lymphatic Drainage / Acne Control Soothing Mask / Ampoule & Cryo Treatment

Acne Prone Skin Type

Renewal 90min | 228

Derma Peel Facial

Skin Conditioning / Derm-A-Renew Skin Renewal Concentrate 10%-20%-40% / Lymphatic Drainage / Ampoule & Cryo Treatment / Physio Marine Peel Off Mask

All skin types

Rebirth Cocoon 90min | 228

Smooth and Brightening Facial

Deep Cleansing / Exfoliation / Ampoule / Sleeping Beauty Mask / Ocula Biometric Eye Cream / Eye Contour Collagen Mask / Maxi Glow Mask / Cocoon Mousse Mask / Fresh Blossomy / VivaCell Glow

All skin types

Retune 90min | 228

Sensitive Skin Facial

Exfoliation / Extraction / Lymphatic Drainage / Sensitivity-control Mask / Ampoule & Cryo Treatment

Sensitive Skin Type

Aura Divine 90min | 248

4 in 1 Vivacell Facial for Dull & Tired Skin

Exfoliation / Extraction / Lymphatic Drainage / Double Mask / Ampoule & Cryo Treatment

All skin types

Rewind 90min | 248

Caviar Anti Aging Facial

Exfoliation / Extraction / Lymphatic Drainage / Caviar Restoration Anti-age Mask / Ampoule & Cryo Treatment

All skin types except for sensitive

Korean V-Shaped Face Lift 90min | 268

Face Lift & Contour Facial

Cleansing / Exfoliation / Express Extraction / RF Therapy / Hy-O-Silk Hydroboost Mask / Hydroboost Lumination Mask / Ampoule & Cryo Treatment / Aura Glow Mask

Dry to normal skin

Teens TeaTree Facial 60min | 98

Oil and Acne Control / Minimises Pores

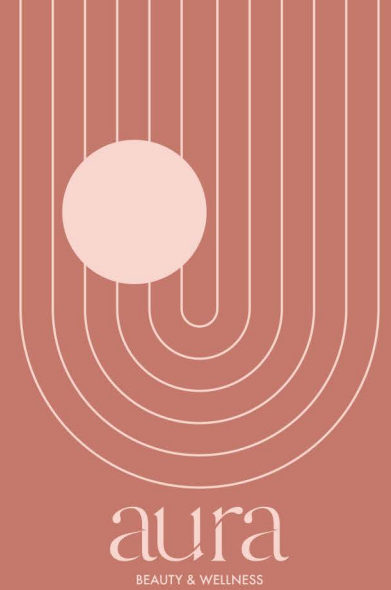
Deep Cleansing / Exfoliation / Extraction / Cryo Treatment / High Frequency / Tea Tree Mask

Acne Prone Skin Type

Guasha Eye 45min | 128

Toning up & re-energize tired dull-looking eyes

Increases blood circulation / Reduces water retention / Lifts & contours skin / Dispels puffiness / Releases muscular



body.

Aura 360° Cool Shaping 2 Handles | 380

Using clinically proven cryolipolysis technology, AuraCryo™ Fat Freeze is a full body contouring treatment that targets multiple body areas using advanced controlled cooling technology. It is able to achieve permanent fat loss and virtually target all areas of the body.

Aura RF Body Contour 45min | 250

Slimming treatment using patented RF machine and technology to tone skin, reduce cellulite with visible results within few sessions.

Aura Sculpt Tone-Up 2 Handles | 250

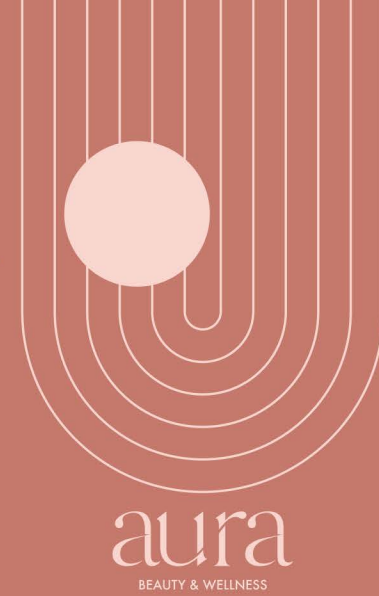
Using Hi-EMT(High Energy Focused Electromagnetic Wave), Aurasculpt™ Tone-up is a revolutionary technology that can help rebuild muscles and burn fats rapidly in a non-invasive manner.

Within a 30min treatment session, more than 30,000 pulses are emitted which is equivalent to:

- 30,000 sit-ups (when the abdomen is targeted)
- 30,000 butt lifts (when the butt is targeted)
- 30,000 bicep/tricep curls (when the arms are targeted)
- 30,000 kegel exercises (when the pelvic floor muscles are targeted)

Aura 360 Body Program

Combine treatments to gain quicker and effective results through out 360 Body Program where you could target problem areas while still achieve a more holistic overall look and wellbeing. The program is a combination of Body Treatments and Dietary Regime. [please consult for more info]



waxing .

Upper Lip	15
Under Arms	22
Half Arms	25
Full Arms	35
Half Legs	35
Full Legs	65

brow & lash .

Keratin Lash Lift	78
Brow Henna	78